

CCR10 Antibody (N-term)
Affinity Purified Rabbit Polyclonal Antibody (Pab)
Catalog # AP13744A**Specification**

CCR10 Antibody (N-term) - Product Information

Application	WB,E
Primary Accession	P46092
Other Accession	NP_057686.2
Reactivity	Human
Host	Rabbit
Clonality	Polyclonal
Isotype	Rabbit IgG
Calculated MW	38416
Antigen Region	1-30

CCR10 Antibody (N-term) - Additional Information**Gene ID** 2826**Other Names**

C-C chemokine receptor type 10, C-C CKR-10, CC-CKR-10, CCR-10, G-protein coupled receptor 2, CCR10, GPR2

Target/Specificity

This CCR10 antibody is generated from rabbits immunized with a KLH conjugated synthetic peptide between 1-30 amino acids from the N-terminal region of human CCR10.

Dilution

WB~~1:1000

E~~Use at an assay dependent concentration.

Format

Purified polyclonal antibody supplied in PBS with 0.09% (W/V) sodium azide. This antibody is purified through a protein A column, followed by peptide affinity purification.

Storage

Maintain refrigerated at 2-8°C for up to 2 weeks. For long term storage store at -20°C in small aliquots to prevent freeze-thaw cycles.

Precautions

CCR10 Antibody (N-term) is for research use only and not for use in diagnostic or therapeutic procedures.

CCR10 Antibody (N-term) - Protein Information**Name** CCR10

Synonyms GPR2

Function Receptor for chemokines SCYA27 and SCYA28. Subsequently transduces a signal by increasing the intracellular calcium ions level and stimulates chemotaxis in a pre-B cell line.

Cellular Location

Cell membrane; Multi-pass membrane protein.

Tissue Location

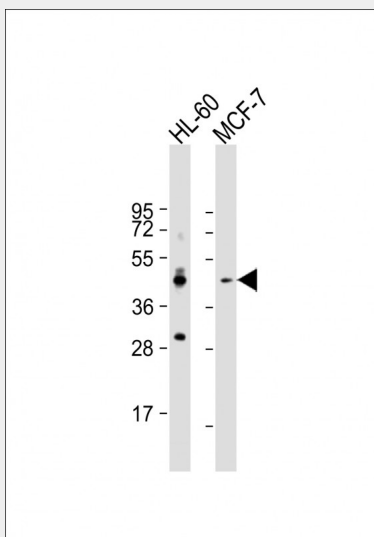
Expressed at high levels in adult testis, small intestine, fetal lung, fetal kidney. Weaker expression was observed in many other adult tissues including spleen, thymus, lymph node, Peyer patches, colon, heart, ovary, peripheral blood lymphocytes, thyroid and spinal cord. Also expressed by melanocytes, dermal fibroblasts, dermal microvascular endothelial cells. Also detected in T-cells and in skin- derived Langerhans cells.

CCR10 Antibody (N-term) - Protocols

Provided below are standard protocols that you may find useful for product applications.

- [Western Blot](#)
- [Blocking Peptides](#)
- [Dot Blot](#)
- [Immunohistochemistry](#)
- [Immunofluorescence](#)
- [Immunoprecipitation](#)
- [Flow Cytometry](#)
- [Cell Culture](#)

CCR10 Antibody (N-term) - Images



All lanes : Anti-CCR10 Antibody (N-term) at 1:1000 dilution Lane 1: HL-60 whole cell lysate Lane 2: MCF-7 whole cell lysate Lysates/proteins at 20 µg per lane. Secondary Goat Anti-Rabbit IgG, (H+L), Peroxidase conjugated at 1/10000 dilution. Predicted band size : 38 kDa Blocking/Dilution buffer: 5% NFDM/TBST.

CCR10 Antibody (N-term) - Background

Chemokines are a group of small (approximately 8 to 14 kD), mostly basic, structurally related molecules that regulate cell trafficking of various types of leukocytes through interactions with a subset of 7-transmembrane, G protein-coupled receptors. Chemokines also play fundamental roles in the development, homeostasis, and function of the immune system, and they have effects on cells of the central nervous system as well as on endothelial cells involved in angiogenesis or angiostasis. Chemokines are divided into 2 major subfamilies, CXC and CC, based on the arrangement of the first 2 of the 4 conserved cysteine residues; the 2 cysteines are separated by a single amino acid in CXC chemokines and are adjacent in CC chemokines. CCR10 is the receptor for CCL27 (SCYA27; MIM 604833); CCR10-CCL27 interactions are involved in T cell-mediated skin inflammation (Homey et al., 2002 [PubMed 11821900]).

CCR10 Antibody (N-term) - References

Davila, S., et al. Genes Immun. 11(3):232-238(2010)
Fujimoto, S., et al. Cytokine 44(1):172-178(2008)
Luttrell, L.M. Mol. Biotechnol. 39(3):239-264(2008)
Lambert, N.A. Sci Signal 1 (25), RE5 (2008) :
Wu, C., et al. Proteomics 7(11):1775-1785(2007)